

**PROGRAM HIGHLIGHTS**

- 3- year fellowship focused on growing expertise in clinical, research and advocacy skills
- Funding for 3 Fellows per year/cycle
- **Robust Inpatient Service** with multidisciplinary approach to the care of AYAs  
Call Structure: 1<sup>st</sup> year (10 weeks); 2<sup>nd</sup> year (8 weeks); 3<sup>rd</sup> year (4 weeks)
- **Diverse Outpatient Training** in primary care with embedded Title X Family Planning Clinic, and subspecialty care in Gender Affirming Care, HIV prevention and management, Substance Use, Eating Disorder, Adolescent GYN, Covenant House
- **Elective Opportunities** in Sports Medicine, Integrative Health, Dysautonomia, Student Health, Transition to Adult Care, Complex GYN and others across CHOP and Penn Medicine
- **Longitudinal Curriculum:** LARC Curriculum, Advocacy, Reproductive Justice, Leadership Training, Board Preparation
- **LEAH Fellowship Program:** Trip to PA Department of Public Health MCHB Program in Harrisburg PA and Hershey PA, Journal Club, Interdisciplinary Case Conference
- **Research and QI project:** Opportunity to complete additional coursework on Qualitative Methods, Epidemiology and Biostatics and obtain **Master's Degree** at UPenn
- Strong presence in **SAHM, NASPAG, WPATH, AMERSA, AAP** National Conferences



PD: Oana Tomescu, MD, PhD ([tomescu@chop.edu](mailto:tomescu@chop.edu))  
 APD: Gladyne Confident, MD ([confidentg@chop.edu](mailto:confidentg@chop.edu))  
 PC: Stephanie Ragsdale ([ragsdales@chop.edu](mailto:ragsdales@chop.edu))  
 For more information on the fellowship, visit our website





# Children's Mercy Kansas City Adolescent Medicine Fellowship

<https://www.childrensmercy.org/professional-education/training-programs/fellowship/adolescent-medicine/>

## Program Highlights:

- Small individualized program.
- Subspecialty training with continuity clinics in Adolescent Specialty Clinic and Eating Disorder Center.
- Diverse faculty with varied interests and expertise.
- High volume of LARC procedures.
- Title X grant funding
- Participation in multidisciplinary gender affirming care clinic.



## CMKC Fellowship Highlights:

- Funding for certificate or master's in pediatric bioethics, health professions education, public health, or bioinformatics and clinical research.
- Internal grant funding and grant writing support for fellow research.
- Excellent work-life balance and hospital-sponsored wellness support.

Program Director: Andrea Nos, MD, MHPE

Email: [alnos@cmh.edu](mailto:alnos@cmh.edu)



Program Coordinator: Sarah King, MS, C-TAGME

Email: [srking@cmh.edu](mailto:srking@cmh.edu)





We Treat Kids Better

The **Division of Adolescent and Young Adult Medicine at Children's Hospital Los Angeles** was established in 1963, training adolescent medicine fellows and producing experts in the field since 1967.

Our fellowship program features an interdisciplinary, bio-psychosocial model of care, and offers fellows a unique, rich cultural experience featuring gender care, specialty training, eating disorders, inpatient care, etc. via numerous community based programs and outpatient care training sites, such as LA Job Corp, My Voice, Covenant House, Planned Parenthood LA, and more. Our Division has also been awarded a renewed Leadership Education in Adolescent Health (LEAH) grant from the Maternal and Child Health Bureau, making it one of only seven LEAH programs nationwide. Our LEAH curriculum provides interdisciplinary leadership training in adolescent health and offers didactic and project-based modules on structural racism and its impact on the 5 LEAH disciplines: medicine, nursing, nutrition, psychology, and social work.

We focus on comprehensive health care and programming that is client-directed, sex-positive, and celebrates that young people have the agency to make health decisions for themselves and their children.

We *believe* in the importance of working toward sustainable improvements and growth that support equity and anti-oppression; address health disparities caused by systems informed by white supremacy; and support the overall health and well-being of young people, specifically Black, Indigenous and Youth of Color (BIYOC).

To learn more, please visit our webpage: [Adolescent Medicine Fellowship | Children's Hospital Los Angeles \(chla.org\)](https://www.chla.org/adolescent-medicine-fellowship)

For any specific and further questions, please contact Dr. Jonathan Warus ([jwarus@chla.usc.edu](mailto:jwarus@chla.usc.edu)) or Dr. Michele Roland ([mroland@chla.usc.edu](mailto:mroland@chla.usc.edu))



# LEAH Fellowship Program

- Mission: to train leaders in Adolescent Health including in research, medical education, and health policy
- Clinical Experiences
  - Adolescent and Young Adult Clinic: primary and subspecialty care (eating disorders, menstrual issues, contraception, etc.)
  - Inpatient Eating Disorder Service & General Adolescent Consults
  - Electives: Addiction Medicine, Gender Medicine, Family Planning, Psychiatry, Adolescent Gynecology, Sports Medicine, College Health
- Research
  - 35% to 55% research time per year, increasing annually
  - More NIH funding than any other public institution
  - Formal training/course work for those interested in being leaders in medical education and research.
- Other Fellowship Information
  - LEAH program
  - 1 to 3 Fellows per year
  - Diverse urban population
  - Focus on fellows' wellness with regular formal support groups
  - San Francisco is in the 60s to 70sF year-round with great access to national parks and urban cultural centers
  - Program Director: Marissa Raymond-Flesch, MD, MPH, [Marissa.Raymond-flesch@UCSF.edu](mailto:Marissa.Raymond-flesch@UCSF.edu)





# Children's National Hospital Adolescent Medicine Fellowship

- Located in beautiful, vibrant Washington, DC!
- Our Medical Team: Up to 5 fellows, 5 Adol Med core faculty, 2 affiliate Adol Med faculty, 2 Gen Peds faculty, a wonderful team of 6 APP's and growing!
- We offer multidisciplinary team-based care throughout the DMV area delivered in newly designed and updated clinical spaces offering robust primary and subspecialty care services.
  - Specialty outpatient clinical opportunities in eating disorder care, LARC clinic, sexual health services including PrEP, sports medicine, gender-affirming care (Youth Pride Clinic), school based health (2 SBHC's), college health, substance use disorder and more.
- Inpatient academic team and consultation service offers subspecialty management of substance use issues (e.g. withdrawal or CHS), eating disorders, sexual health needs (e.g. PID), non-surgical gyn (e.g. AUB, dysmenorrhea), and contraceptive management.
- Advanced educational opportunities through George Washington University (MPH, M.Ed.), currently with FULL tuition benefits.
- Research Instructor appointment at George Washington University, Department of Pediatrics.

Program Director: Martha Perry, MD [mfperry@childrensnational.org](mailto:mfperry@childrensnational.org)

Program coordinator: Angela Ellis- [aellis@childrensnational.org](mailto:aellis@childrensnational.org)



Current fellows: Dara Jackson & Ana Patricia Torga (PGY-4); Incoming Fellow: Yash Shaw



## Adolescent Medicine Fellowship Program

Program Director: Rebecca Beyda, MD, MS    Associate Program Director: Asha Davidson, MD, MPH

### Program Overview

- Two fellows- One available spot
- ACGME accredited 3-year program
- Fellowship program is set within one of the largest medical centers in the world.
- Our program has a very strong primary care focus, but also the flexibility to allow fellows to find their niche within the field.
- Our faculty staffs four detention facilities where fellows see a large volume of patients; fellows also have a dedicated continuity clinic within the medical center in addition to an adolescent clinic at one of the county hospitals.
- Fellows have an opportunity to obtain either a master's in public health or clinical science and have protected time during the fellowship to accomplish this.
- Our faculty and former fellows have been very successful in conducting research, publishing manuscripts, and obtaining grant funding.

### Clinics & Programs

- UT Physicians Adolescent Medicine Clinic
- Cleveland E. Odom (CEO) Pediatric and Adolescent Health Care Center
- UT Physicians Heights Adolescent Medicine
- UT Physicians Jensen
- Young Women with Bleeding Disorders Clinics
- UT Physicians Pediatric Center – The Woodlands
- UTHealth Houston Center for Eating Disorders
- Programs:
  - Weight Management Clinics
  - Juvenile Detention Centers

### UT Physician Group



### Sub-specialty Rotations

- Sports Medicine
- Addiction Medicine
- Endocrinology
- OB/GYN
- Dermatology
- Inpatient/Outpatient Psychiatry
- Inpatient Texas Children's Hospital



# Adolescent Medicine Fellowship



**Structure:**

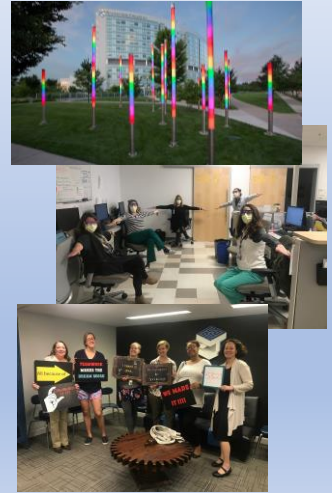
- 1 Fellow/year
- 50% clinical overall with decreasing clinical time/increasing research time over course of training
- Longitudinal clinical experiences to enhance continuity and learning

**Clinical Experiences:**

- Adolescent Medicine inpatient and consultative service (average census 3-5 patients)
- Adolescent Primary Care clinic
- Dedicated outpatient subspecialty clinics: GYN, BC4Teens, Gender Care, Substance/STAR, Eating Disorders
- Community Sites: Juvenile Intervention Center, STAR House (homeless youth)
- Popular Electives: Sports Medicine, Psychiatry, HIV clinic, Endocrinology, Healthy Weight/Bariatric program

**Additional Information:**

- Division of Adolescent Medicine with 10 faculty, 3 APNs and multidisciplinary clinical staff
- 1:1 or 1:2 attending-to-fellow ratio in subspecialty clinics
- Opportunity to obtain masters degree in medical science, public health, or biomedical education
- Paid membership to SAHM, AAP/Section of Adolescent Health, NASPAG



# Adolescent Medicine Fellowship



- Located in Columbus, Ohio
- 15<sup>th</sup> largest city in the United States with the largest young professional networks in the country
- Columbus is recognized for its neighborhoods ranging from historic to hopping, for its fabulous casual and fine dining venues, shopping experiences, museums, zoo, and more
- If you are a sports enthusiast, there is no offseason in the Columbus area with a wide variety of events and venues. Columbus is home to the NHL Columbus Blue Jackets, MLS Columbus Crew, MiLB Columbus Clippers, and The Ohio State University Buckeyes



### Contact Information

Cynthia Holland-Hall, MD, MPH  
Fellowship Director

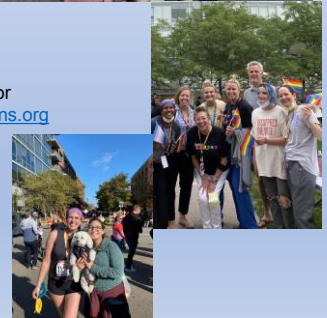
[Cynthia.Holland-Hall@NationwideChildrens.org](mailto:Cynthia.Holland-Hall@NationwideChildrens.org)

Maria Ash, MD, MA(Ed)  
Associate Program Director

[Maria.Ash@NationwideChildrens.org](mailto:Maria.Ash@NationwideChildrens.org)

### Current Fellows

- Kristin Reilly, MD – PGY-6 ([Kristin.Reilly@nationwidechildrens.org](mailto:Kristin.Reilly@nationwidechildrens.org))
- Amy Zawacki, MD – PGY-5 ([Amy.Zawacki@nationwidechildrens.org](mailto:Amy.Zawacki@nationwidechildrens.org))
- Anna Carleen, MD – PGY-5 ([Anny.Carleen@nationwidechildrens.org](mailto:Anny.Carleen@nationwidechildrens.org))
- Jordi Friese, MD – PGY-4 ([Jordi.Friese@nationwidechildrens.org](mailto:Jordi.Friese@nationwidechildrens.org))





# UIC/Cook County Adolescent Medicine Fellowship Program



Felicia Scott-Wellington, MD  
*Interim Program Director*

Karen Simpson, MD  
*Associate Program Director*

## Program Highlights

- 3-year ACGME fellowship that includes robust clinical curriculum and opportunities for scholarship and advocacy

### **Program Culture**

- Intimate program setting which allows for strong collaborative relationships between faculty and fellows and flexibility in tailoring curriculum to meet educational goals

### **Institution Culture**

- Minority serving institution with a focus on diversity in an urban setting
- Mission-driven program caring for a largely vulnerable patient population
- Funding support to present research at national meetings

### **Geographic Culture**

- Both UIC and Stroger are located in the heart of Chicago with a thriving cultural scene, vibrant street art and an amazing selection of restaurants
- Chicago provides outdoor activities, sports entertainment, parks, festivals and restaurants in all 4 seasons

## Curricular Highlights

- Clinical experiences: school-based health centers, adolescent psychiatry inpatient, joint med-psych outpatient, eating disorders, juvenile detention clinics, family planning, sports medicine, obesity treatment, trauma, and violence prevention.
- Continuity Clinics: CCHHS Adolescent and Young Adults Clinic, UIC Adolescent Clinic, and opportunities for additional longitudinal experiences in 2<sup>nd</sup> and 3<sup>rd</sup> year
- Weekly Collaborative Didactic Lectures twice a week
- Scholarly Research Mentorship
- Board Preparation

### **Career Preparation:**

- 14% Non-Academic Positions
- 86% Academic Positions

## **Faculty:**

- Felicia Scott-Wellington, MD
- Sadhana Dharmapuri, MD
- Maureen McLachlan, APRN
- Tatia Hardy, MD

### **Program Coordinator:**

Adriana Gasca

### **More Information:**

Email: [agasca2@uic.edu](mailto:agasca2@uic.edu)

[Adolescent Medicine Fellowship](#) | [Chicago Medicine \(uic.edu\)](#)

# Adolescent Medicine Fellowship at Mount Sinai

Come train with us in New York City caring for the underserved!!

- The **Adolescent Health Center (AHC)** is a large stand alone Adolescent Clinic providing for adolescents and young adults (10-26 yo)
- Committed to **health equity** and **social justice** providing free and confidential care to our NYC Community through a unique healthcare model with **philanthropic** and **grant** based funding with the support of a major academic health system
- 3 Adolescent Fellows (1 per year), with energetic faculty and staff
- Excellent training and **continuity** in both **primary** and **subspecialty** adolescent care
- Gender Affirming / LGBTQ+ Care, LARC, STIs, Teen Parent Program, Eating Disorder, Mental Health, College and School-Based Health, Walk-In Clinic
- Onsite Psychologists, Psychiatrists, Health Educators, Same Day Social Work
- Weekly Didactics and Educational Opportunities
- Located on 94th and 2nd Ave - **Right off Q-Train**
- Follow us on Instagram: [@adhealthcenter](#)
- Program Contacts:
  - PD - [Sharon.Edwards@mountsinai.org](mailto:Sharon.Edwards@mountsinai.org)
  - PC - [Ivette.Mendez@mssm.edu](mailto:Ivette.Mendez@mssm.edu)



**Mount  
Sinai**

*Kravis Children's Hospital*

# University of Rochester Adolescent Medicine Fellowship

- Nurturing environment that highly values our fellows and their feedback, **emphasizes personal and team wellness**, embraces diversity, and participates in antiracism initiatives
- One of the **first adolescent medicine fellowship programs**; UR is the home of the biopsychosocial model of health care
- Location: urban, suburban and rural settings; culturally and geographically diverse patient population
- We provide **strong interprofessional clinical training** in our hospital-based subspecialty clinic on gender health, eating disorders, and reproductive health.
- **Close relationships with community partners** including Planned Parenthood, school-based health centers, university health services, the county STD clinic, substance use disorder treatment programs, & the juvenile justice system providing unique training opportunities.
- **Flexible, individualized curriculum** allowing fellows to choose and create their own electives and participate in individualized pathways in QI, advocacy, ethics, or health policy.
- **Scholarly Activity & QI Projects:** Option to pursue your own interests or work with a faculty member on an ongoing project
- **95% Tuition Waiver** for advanced degree programs such as MPH, Masters in Health Professions Education, Executive MBA



Elena Galindo, MD  
3<sup>rd</sup> Year Fellow



Alexandra Fayne, MD  
2<sup>nd</sup> Year Fellow



Amy Wright, DO  
1<sup>st</sup> Year Fellow

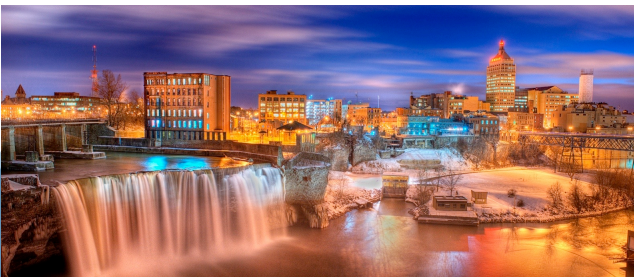


Susan "Shellie" Yussman, MD, MPH  
Program Director

*"Our program places great emphasis on educating fellows who are not only good clinicians, but also good teachers, good communicators, engaged members of society, advocates, and well-balanced humans."*

*- Former Fellow*

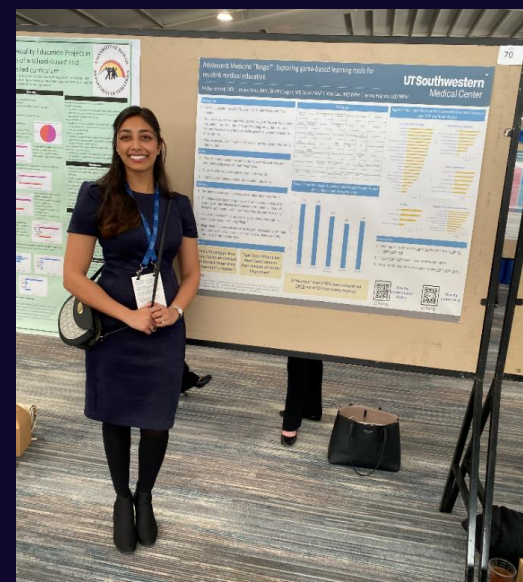
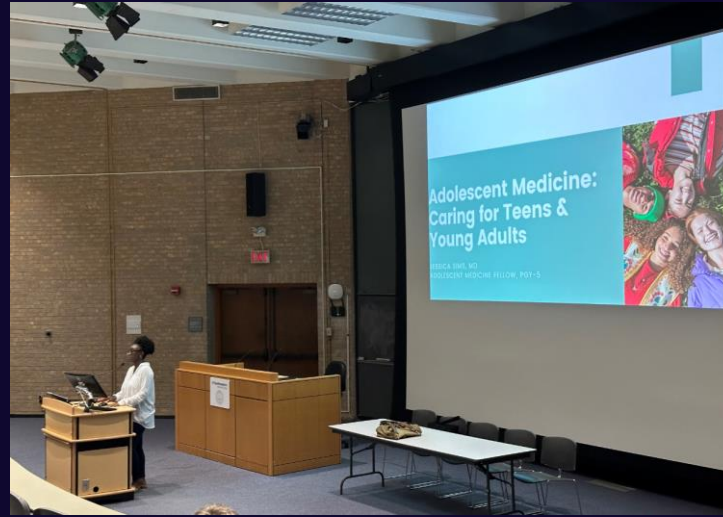
Learn more about our [Program](#)    Learn more about [Rochester, NY](#)





# Adolescent Medicine Fellowship at UT Southwestern Dallas, TX

Program Director: Jenny Francis, MD, MPH  
Jenny.Francis@UTSouthwestern.edu



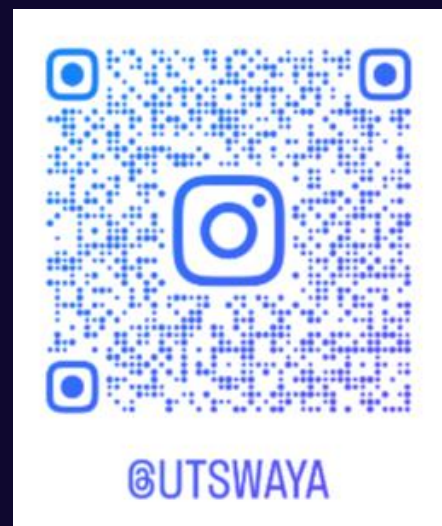
## CLINICAL STRENGTHS

- Abundant procedural training
- Diverse clinical experiences
  - Diverse patients, juvenile justice, eating disorders, college health, teen pregnancy, substance use, and more!
- Flexible, customizable scheduling
- 18 weeks of phone call per year
- One main physical location
- Faculty with wide breadth of experiences
- Ample teaching and advocacy opportunities



## SCHOLARSHIP OPPORTUNITY

- Research opportunities
  - Program Director is a researcher
- Mentorship opportunities
- Potential for advanced degrees
- Diversity opportunities



### 1) The Program:

<https://www.utsouthwestern.edu/departments/pediatrics/divisions/developmental-behavioral/fellowship/adolescent-medicine/>

### 2) Dallas Life:

<https://www.utsouthwestern.edu/education/students/dallas/>

### 3) Salaries and Benefits (see UT Southwestern Sample Contract):

<https://www.utsouthwestern.edu/education/graduate-medical-education/fellowships/>

# University of Alabama at Birmingham (UAB) Heersink School of Medicine Adolescent Medicine Fellowship Program



## Primary and Subspecialty Care

- Adolescent primary care
- Eating disorders
- Substance abuse
- Gender health
- Adolescent gynecology
- Menstrual disorders
- HIV management
- Healthcare for legally involved youth
- College health
- Sports medicine
- Psychiatry
- Endocrinology
- Weight management

## Leadership Education in Adolescent Health (LEAH)

- one of eight programs nationally

Advocacy Training

Core Fellowship Curriculum

Fellows Research Roundtable

Mini Quality Academy

Mini Health Disparities Academy

Health Equity Scholars Program

Obtain a Graduate Degree or Certificate Programs

- Public Health
- Healthcare Quality and Safety
- Healthcare Simulation
- Business Administration
- Mentoring and Leadership
- Applications of Mixed Methods Research
- Research Communication



Children's of Alabama, the only  
free-standing children's hospital  
in the state

**UAB named  
one of  
AMERICA'S BEST  
In-State  
Large Employers**

—Forbes



# Medical College of Wisconsin Children's Wisconsin Adolescent Medicine Fellowship



Kids deserve the best.

THE DIVISION OF ADOLESCENT MEDICINE OFFERS A  
3-YEAR, ACGME-ACCREDITED FELLOWSHIP PROGRAM  
FOR SUBSPECIALTY RESIDENTS

About our Fellowship: <https://www.mcw.edu/admedfellow>

About Milwaukee: <https://www.visitmilwaukee.org>



## CONTACT US

Program Director:

M. Susan Jay, MD  
([sjay@mcw.edu](mailto:sjay@mcw.edu))

Associate Director:

Jen Makrides, MD, MA, MHS  
([jmakrides@mcw.edu](mailto:jmakrides@mcw.edu))

Fellowship Coordinator:

Orlando Diaz  
([odiaz@mcw.edu](mailto:odiaz@mcw.edu))

Photo by Visit Milwaukee





# Cincinnati Children's Hospital Medical Center Adolescent Medicine Fellowship

## Contact Information

Division Director

Emmanuel Chandler, MD ([emmanuel.chandler@cchmc.org](mailto:emmanuel.chandler@cchmc.org))

Fellowship Director

Lea Widdice, MD ([lea.widdice@cchmc.org](mailto:lea.widdice@cchmc.org))

Associate Fellowship Director

Lisa Johnson, MD ([lisa.johnson@cchmc.org](mailto:lisa.johnson@cchmc.org))

Fellowship Coordinator

Nicole Hollon ([nicole.hollon@cchmc.org](mailto:nicole.hollon@cchmc.org))



## FACULTY, FELLOWS AND STAFF

- 3 current fellows; 1-2 fellows per year
- Interdisciplinary care model
  - Medical providers (8 physicians, 5 APPs)
  - Nurses and medical assistants
  - Behavioral health professionals
  - Dietitians

## PROGRAM HIGHLIGHTS

- Supportive hospital and governments systems
  - Largest pediatric gender-care clinic in the US
  - Confidential, grant-funded sexual healthcare
- Wide range of electives to fit your interests!
  - Ped/Adolescent Gyn, Child Psychiatry, Sports Medicine, ACUTE (Adult Eating Disorder ICU), STEP (Adolescent Substance Use), Lifestyle Medicine, etc.
- Rocky Mountain SAHM Leadership and Advocacy opportunities
- Working with residents as both colleagues and learners
- Multi-level mentorship opportunities

## PROGRAM STRUCTURE

- Year 1: 60-70% clinical, 30-40% research/admin
- Year 2: 50% clinical, 50% research/admin
- Year 3: 30-40% clinical, 60-70% research/admin
- Hospital Call: one week per month
- Research project/Quality Improvement project
- Protected weekly Academic Half-Day

## CLINICAL SPACES

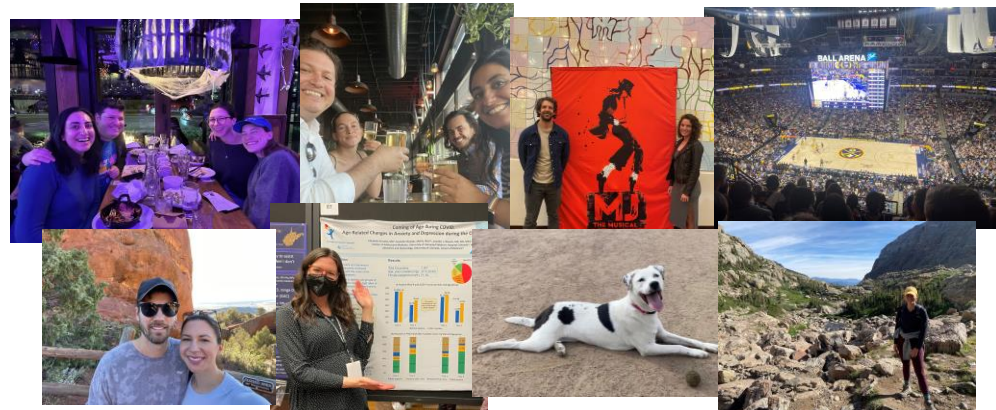
- Adolescent Medicine Clinic (Primary Care/Consults)
- BC4U (Title-X funded Family Planning)
- TRUE Center for Gender Diversity
- Complex Diagnosis Clinic (Chronic fatigue, POTs)
- Inpatient Consult Service
- Eating Disorder Program (PHP)

JOIN US



## AURORA, DENVER AND BEYOND

- Everchanging food and drink scene (multicultural grocery stores, food trucks, James Beard and Michelin Star nominees, Breweries)
- Arts & Culture (Denver Art Museum, Colorado History Center, Children's Museum, Nature and Science, Molly Brown House)
- Sports (Nuggets, Avalanche, Broncos, Rockies, Rapids, Mammoth)
- Music (Red Rocks Amphitheater, Ball Arena, Ogden Theater, Colorado Symphony Orchestra, Mission Ballroom)
- Hiking, biking, rafting, camping, climbing, skating, you name it!



# Adolescent Medicine Fellowship Program

## Children's Hospital at Montefiore/Albert Einstein

- **2 Fellows per year/cycle**
- **Structure:**
  - 1<sup>st</sup> year: 5 - 6 weeks of inpatient service, 5 clinic sessions at CHAM PASS/week, school health
  - 2<sup>nd</sup> & 3<sup>rd</sup> year: 6-8 weeks of inpatient service, 2-3 clinic sessions/week at CHAM PASS, college health, electives
  - Dedicated research and academic studies scheduled, including protected research time
  - Numerous teaching opportunities (clinical, didactic, case based)
- **Rotation Sites/Types:**
  - **Main Hospital/Site:** Children's Hospital at Montefiore, Bronx, NY (Inpatient & Consults)
    - Gynecology & Reproductive Care (including Medically Complex Youth)
    - Long-Acting Reversible Contraception Clinic
    - Young Men's Health
    - Gender-Affirming Care
    - Eating Disorders
    - Healthy Lifestyle
  - **Community Sites:** school-based health (high school & college campuses), non-domiciled youth, youth in foster care
- **Other Fellowship Information:**
  - Mainly urban, minoritized, underserved population in NYC area (Bronx, Brooklyn, Manhattan, Queens), Westchester, Rockland, Dutchess Counties, Northern NJ
  - Other opportunities include: Addiction Medicine Mentored Training Program, Advocacy Track, MS (Clinical Research Training Program through Albert Einstein), MPH (through Albert Einstein), Innovation Biodesign Training Program (through Montefiore/Einstein)
- **Contact:** Program Coordinator: Melissa Diaz, 718-920-6781, [meldiaz@montefiore.org](mailto:meldiaz@montefiore.org)
  - Program Director: Elizabeth Alderman, MD [ealderma@montefiore.org](mailto:ealderma@montefiore.org)
  - Associate Program Director: Melissa Menezes, MD [mmenezes@montefiore.org](mailto:mmenezes@montefiore.org)



**Check out our  
virtual tour!**



# ADOLESCENT MEDICINE @ NYP-COLUMBIA

The Section of Adolescent Medicine in the Division of Child and Adolescent Health at the New York-Presbyterian Morgan Stanley Children's Hospital sponsors an ACGME-accredited fellowship program designed to prepare young physicians for careers as leaders in the field of academic adolescent health care.



## LOCATIONS FOR TRAINING

- NYP-Morgan Stanley Childrens Hospital
- Columbia University Undergraduate Medical Practice
- Columbia University Faculty Practice
- Weill Cornell Medicine
- NY State Psychiatric Institute







- ACGME accreditation 2022
- 1 fellow/year
- Multidisciplinary program with **5 full-time** adolescent medicine faculty members
- 3-year program: 70% clinical year 1, with increased focus on scholarly activity, teaching and **academic professional development** in years 2&3
- Primary and Subspecialty Care
  - Adolescent and Young Adult Health Clinic at One Hundred Oaks
  - Adolescent medicine subspecialty/referral clinic sessions
  - Practical experience in placing and managing LARC
  - Eating disorder outpatient and inpatient **interdisciplinary** team
  - LGBTQ+ wellness program
  - College-based student health service
  - Care of adolescents and young adults affected by and at-risk for HIV
  - Sports Medicine
  - Child and Adolescent Psychiatry
- **Scholarly activity:** advocacy, clinical research, ethics, quality improvement, formal training in medical education and research
- Nashville is a vibrant, growing, friendly city – and the songwriting capital of the world!





# Boston Children's Hospital Adolescent Medicine Fellowship Program

<https://dme.childrenshospital.org/graduate-medical-education/trainings-programs/division-of-adolescent-young-adult-medicine-fellowship-training/>

- 2-3 medical fellows per year
- Years 1 & 2
  - Outpatient: 4.5 sessions per week when not on call; primary and specialty care, community health, virtual and in-person visits
  - Inpatient: on call for 1wk at a time, weeks split between 1<sup>st</sup> and 2<sup>nd</sup> year fellows, nurse answering service overnight and on weekends, NP, at-home call, resident teaching, primary service and consultative care
  - Specialty care: eating disorder, repro endo, bone health, LARC, HIV, media overuse, chronic fatigue, substance use, sports med, gyn, gender affirming care
  - Academics: LEAH in Year 1, Current Opinions review, summer research experience resulting in abstract & manuscript in Year 2, lots and lots of amazing conferences
- Year 3 (“the icing on the cake year”)
  - Outpatient Clinic: continuity care (1.5 clinics per week, on average)
  - Inpatient: 1-3 call weeks per year with graduated independence
  - Academics: determined by fellow choice of track (MPH/MS, med ed, policy, QI, research, global health)



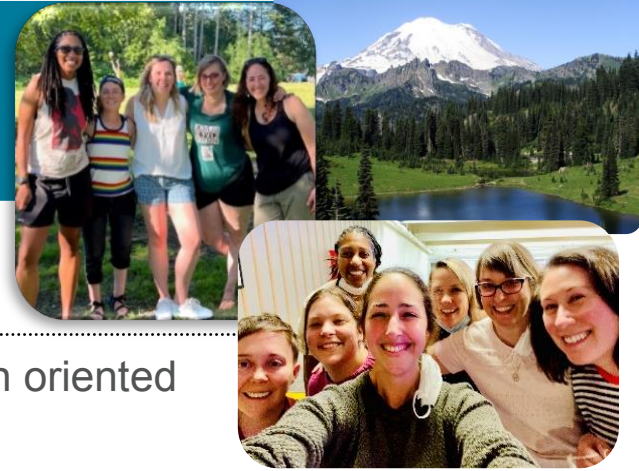
Coordinator: Jennifer Liu Goluszka, [jennifer.liugoluszka@childrens.harvard.edu](mailto:jennifer.liugoluszka@childrens.harvard.edu)

APD: Jessica Addison, MD, MS, [jessica.addison@childrens.harvard.edu](mailto:jessica.addison@childrens.harvard.edu)

PD: Sarah Pitts, MD, [sarah.pitts@childrens.harvard.edu](mailto:sarah.pitts@childrens.harvard.edu)



# Seattle Children's / UW Adolescent Fellowship



- **Structure:**

- First year is clinically focused, years 2-3 more research oriented

- **Rotation sites/types:**

- Seattle Children's Hospital: Adolescent Clinic (Gender-affirming care, Eating Disorders), LARC clinic, Gynecology, Sports Medicine, Inpatient Consults
- Community Rotations: School-Based Health, Community Primary Care (OBCC), Kaiser Permanente HMO Clinic, Juvenile Detention, Echo Glen (includes Behavioral/Substance), Homeless Youth Clinic, STD clinic, Substance Use clinic.

- **Other information:**

- LEAH Program
- Serves a 4-state region (Washington, Alaska, Montana, Idaho)
- Diverse population economically, in terms of race/ethnicity, and rural/urbanicity
- Opportunity to obtain MPH or MS, gain excellent research and teaching skills
- Partnerships with multiple T32 fellowships for research-bound fellows
- See each fellow as an individual, tailor second and third year to specific goals
- Absolutely beautiful PNW !



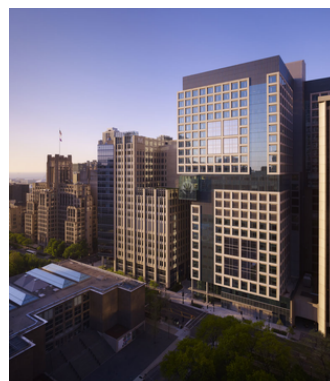
# THE ADOLESCENT MEDICINE FELLOWSHIP PROGRAM OF MCGAW MEDICAL CENTER OF NORTHWESTERN UNIVERSITY AT ANN & ROBERT H. LURIE CHILDREN'S HOSPITAL OF CHICAGO



## OUR MISSION

This mission of our Adolescent Medicine Program is to provide trainees with opportunities to become:  
 Expert clinicians with skills in primary care, inpatient and outpatient consultative care, care for marginalized populations, reproductive and gynecologic care, gender and sexual development, management of substance use disorders, treatment of common mental health concerns, and care for youth infected with HIV.  
 Expert leaders of multidisciplinary teams.  
 Leaders in clinical & translational research with a specific focus on health disparities affecting marginalized youth.  
 Effective advocates for adolescents at local, regional, national and international levels.

Our program has a focus on public health issues that affect marginalized populations and we promote and encourage interdisciplinary care models that include and elevate the voices of the youth we provide care for.



### PROGRAM DIRECTOR

**CHERIE PRIYA DHAR, MD**  
 CPDHAR@LURIECHILDRENS.ORG

### PROGRAM COORDINATOR

**GIA GUERRERO**  
 GGUERRERO@LURIECHILDRENS.ORG

## 3 YEAR ACGME FELLOWSHIP PROGRAM

### PRIMARY AND SUBSPECIALTY CARE

- Adolescent Primary Care
- Eating Disorders
- Substance Use and Prevention
- Gender-Affirming Care
- Gynecology
- Menstrual Disorders
- HIV Management
- Juvenile Justice
- College Health
- Sports medicine
- Psychiatry
- Endocrinology
- Weight Management

### RESEARCH AND SCHOLARLY ACTIVITY

- Extensive research opportunities
- Formal training/course work in medical education and research

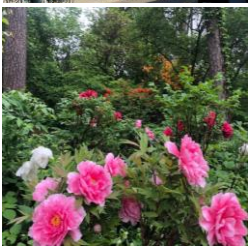
### COMMUNITY PROGRAMS

- TransMentor
- Health Education Program
- Trainings & Education
- Naloxone/Narcan Training & Distribution
- Youth Substance Use Prevention Coalition (SUPC)
- Connect for Youth (C4Y) - Integrated Substance Use Screening/HIV Testing

FOR MORE INFORMATION PLEASE VISIT US AT  
[WWW.PEDIATRICS.NORTHWESTERN.EDU/EDUCATION/FELLOWS/ADOLESCENT/](http://WWW.PEDIATRICS.NORTHWESTERN.EDU/EDUCATION/FELLOWS/ADOLESCENT/)

# University of Michigan/Mott Children's Hospital Adolescent Medicine Fellowship Program

- 1 fellow/year, funding for a total of 3 fellows
- Structure:
  - Clinical time vs. Research Time: allotted clinical and research time each year with increasing research time year by year
- Rotation Sites/Types:
  - Main Hospital/Site: C.S. Mott Children's Hospital/University of Michigan
  - Inpatient care: Adolescent Medicine Consult Service
  - Outpatient Clinics at Mott Hospital: Adolescent/Young Adult Clinic, Pediatric/Adolescent Gynecology Clinic, Ypsilanti Pediatric Clinic for Adolescent Primary Care experience, Pediatric Sports Medicine Clinics (including NeuroSport Clinic for concussion care), Pediatric/Adolescent Gender Services Clinic, U-M Addiction Treatment Services Program, Comprehensive Eating Disorders Program
  - Community Sites: The Corner Health Center in Ypsilanti (serving youth 12-25 and their children) both for Adolescent Medicine Clinic and Adolescent Gynecology Clinic, and School Based Health Clinics (Regional Alliance for Healthy Schools—Ann Arbor, Ypsilanti and Flint)
- Other Fellowship Information:
  - Serves patients from Ann Arbor, Ypsilanti, Toledo & Detroit areas, and more rural areas surrounding Ann Arbor
  - Other opportunities for fellows: Scholars program participation which range from 9 months to 2 years in Med Ed, Healthcare Equity, Patient Safety and Quality, and Healthcare Administration
  - Friendly, collegial small division, flexibility in tailoring your training to your career goals, and a wealth of research collaboration opportunities within the institution
  - Cool things about Ann Arbor: all the college sports you could dream off, great music/arts/dining, Fortune Magazine rated #1 "best place to live for families" in the US in 2022, 25 minutes to the Detroit airport and 45 minutes to Detroit arts/sports/dining
- Contacts:
  - Program website: <https://medicine.umich.edu/dept/pediatrics/divisions/adolescent-medicine/adolescent-medicine-fellowship-program> and <https://medicine.umich.edu/dept/pediatrics/education/fellowships>
  - Program Director/Associate Program Director: Katie Miller and Alana Otto, [ktmil@med.umich.edu](mailto:ktmil@med.umich.edu) and [alanako@med.umich.edu](mailto:alanako@med.umich.edu)
  - Fellows: Natasha Nguyen [natashng@med.umich.edu](mailto:natashng@med.umich.edu), Becca Warwick, [warwicre@med.umich.edu](mailto:warwicre@med.umich.edu), Jess Jary, [jaryj@med.umich.edu](mailto:jaryj@med.umich.edu)





# Johns Hopkins Adolescent Medicine Fellowship



## Mission

- To develop the next generation of leaders in interdisciplinary approaches to adolescent health promotion and disease prevention with a primary goal of eliminating health disparities and achieving health equity

**Fellows per cycle:** 1-3

## Structure

- 1 clinical year (80% clinical/20% research)
- 2 research/scholarly years (80% research/20% clinical)

## Clinical Rotations

- **Core rotations:** AM primary and subspecialty continuity clinic, Inpatient Consult service, Endocrine, Psychiatry, Eating Disorders, Substance use, Sports Medicine, College Health, POTS/CFS Clinic, Dermatology, Gender affirming care, Family Planning/LARC, School Based Health
- **Elective opportunities:** Juvenile justice, HIV prevention and treatment, more of above



# Johns Hopkins Adolescent Medicine Fellowship



## Research Training

- T32 Adolescent Health Promotion Research Training Program focused on sexual and reproductive health
- Master of Health Sciences (MHS) Degree – Johns Hopkins Bloomberg School of Public Health, Graduate Training Program in Clinical Investigation
- External opportunities – e.g. SAHM mentoring forum, NIH-NMA fellows program, UW Principles of STI/HIV Research and Public Health Practice Course

## Other information and opportunities

- Individualized training experiences to meet fellow's goals
- Diverse patient populations
  - including youth with vulnerabilities related socioeconomic status, race/ethnicity, sexual orientation and gender identity, chronic illness or the intersecting identities and experiences.
- Addiction Medicine Training/Board Eligibility
- Infrastructure to support NIH Loan Repayment Program application
- Linkage to expansive and enduring mentorship network
- Warm, collegial, supportive training environment



# Johns Hopkins Adolescent Medicine Fellowship



## Questions?

Errol L. Fields, MD, PhD, MPH  
Program Director, Adolescent Medicine Fellowship  
Division of Adolescent/Young Adult Medicine  
Johns Hopkins School of Medicine

[Errol.Fields@jhmi.edu](mailto:Errol.Fields@jhmi.edu)

Pronouns: he/him/his ([What's this?](#))

Check us out: [www.jhucayah.org](http://www.jhucayah.org)

